

# IS



IS 300h | IS 250 | IS 350

 LEXUS

# CONTENTS

- 8 Brand Heritage
- 10 Introducing the IS
- 12 Style and Design
- 16 Performance
- 18 F Sport
- 20 Mark Levinson
- 22 Safety
- 24 The Power of h
- 26 IS 350 and IS 250
- 28 Exterior Colours
- 30 Interior Trims
- 32 Specifications
- 34 Lexus Ownership Solutions
- 36 Encore Privileges

---





# AMBITION IS THE FUEL OF ACHIEVEMENT

The true essence of life isn't simply about where you happen to be going, but how you choose to get there. The means truly is the end. The vehicle that transports you on life's journey must reflect your own sense of dynamism and verve. Firmly attuned to the road, self assured, vigorously energised. When you choose the IS from Lexus, every journey from where you are now to where you truly want to be takes on a greater sense of vitality and urgency. Feel driven by excitement, be pampered in luxury, take control.







# DESIGN RESHAPES THE WAY YOU SEE THE WORLD

Certain drivers see motor vehicle design as an extension of fashion, to others a luxury car is a statement of intent, it's their voice that speaks to the world. It fits snugly around their outer torso. Its style reflects their attitudes and thoughts. It is dynamic and decisive, positive and potent. Lexus has sculpted the inner sanctum of the IS to define a modern attitude about life. It's about being unexpected, embracing surprise and feeling content within oneself. Life is too short to drive a boring car.



# PURSuing A NEW DEFINITION OF LUXURY

## BRAND HERITAGE

In the mid 1980s a team of passionate designers embarked on a remarkable journey. They travelled to America and integrated themselves into an exclusive neighbourhood to better understand the intricacies of privileged lifestyles.

Designers visited upscale boutiques and exclusive country clubs to discover the true essence of western style and to learn what luxury vehicle buyers really wanted. They observed how a new definition of luxury was permeating American society. Wealth had filtered down into younger hands, and with it came a more simplistic sense of style and sophistication. Fashion, design and architecture were being reshaped by these younger, more affluent professionals who were also turning their backs on conventional luxury vehicles, seeking a more rewarding driving experience.

At the same time, Lexus sent design teams to the French Riviera to gain a sense of European elegance, class and culture. Such a fact-finding mission was followed by one of the most extensive development programs ever undertaken by a motor vehicle company. The end result was the Lexus LS 400, a vehicle so extraordinary, it ultimately redirected the course of luxury vehicle design, elegance and performance.

The late 90s saw the arrival of a more athletic expression of Lexus, the IS 200. It caught the attention of a new generation of younger, achievement focused individuals, whose footloose lifestyles yearned for a more energised ride without leaving indulgence behind. Rather than being simply a condensed form of the original LS, the IS was a vibrant and very different Lexus destined to excel on twisty roads and free flowing highways.

The IS proved to be a worthy platform on which to launch a whole new family of Lexus vehicles, to satisfy upwardly mobile individuals who eagerly embraced change and adopted new ideas faster than any generation in history.

Meanwhile, the Lexus commitment to ground breaking design and forward thinking is forging ahead into bold new territory. One of the more recent reminders has been the unveiling of the LF-CC coupe concept at the Paris Motor Show. The LF-CC serves as a glimpse into the Lexus vehicle of tomorrow, exposing the vibrant new personality of Lexus through its breathtaking, aerodynamic design. Its new generation hybrid power plant unleashes performance worthy of a true sports coupe, while setting new benchmarks for higher efficiency and lower emissions.<sup>(6)</sup>





# EXHILARATION REDEFINED

## INTRODUCING THE IS

When Lexus released the IS 200 in 1999, it not only reinvented Lexus in the eyes of a new generation of drivers but redefined the concept of the modern sports sedan. It delivered precisely what more spirited drivers were asking for: Agility matched with luxury, performance with style, comfort without sacrificing control. Numerous motoring critics and leading Australian auto clubs recognised this and named it 'Best Prestige Car' in 1999. The IS 300 followed close behind its tailpipes, further elevating the sporting credentials of Lexus.

The release of the IS 250 in 2005 blended L-finesse design elegance with greater performance. It won 'Best Prestige Car' in the Australia's Best Cars awards for 2006 and 2007 plus Drive's 'Car of the Year' for 'Best Luxury

Vehicle under \$60K' in 2006. UK's Top Gear named it 'Executive Car of the Year' in 2006, while in Germany it won the 'Golden Steering Wheel Award', Europe's leading vehicle award. Soon a racetrack-proven IS F was unveiled with a potent V8 engine, followed by the seductive IS 250C hardtop convertible.

Now a Lexus IS has been created that doesn't simply break the mould but destroys it. Uniquely focused on driver enjoyment, its revised suspension geometry together with a rigid body structure have further elevated handling precision and cornering dynamics. Its accelerator, transmission shifting performance and braking system work together to deliver increased linear response.

Within its driver focused interior, advanced technologies instil a more vivid sense of exhilaration while immersing you in uniquely Lexus levels of comfort and refinement. F Sport models feature a high technology Thin Film Transistor (TFT) instrumentation lifted straight out of the LFA, which lets you customise the menu display to suit your unique preferences.

It's time to get more response, more exhilaration and feel a greater connection with the vehicle that you drive. The very latest Lexus IS awaits your inspection.







Overseas IS 250 Luxury model with Enhancement Pack 1 shown

# POWERS OF ATTRACTION

## STYLE AND DESIGN

Design is all about desire. It summons the emotions, arouses the senses and unlocks the power of attraction that defies pure logic. The Lexus IS speaks to you through a design language known as L-finesse, defiantly different and passionately Lexus. From the distinctive signature spindle grille flows a body design that comes alive with sweeping curves leading to tight apexes, signalling in no uncertain terms, that once you step into the driver's seat, you're going to get noticed.

LED Daytime Running Lights (DRL) underscore Powerful Bi-Xenon High Intensity Discharge (HID) headlights. The brilliance of hybrid models is even more apparent on the outside, as Luxury Enhancement Packs 2 and 3 include LED headlights which illuminate sooner, shine brighter yet remarkably consume less energy. The foglights display a

similar brilliance as LED bulbs create a whiter, softer light with reduced glare in misty conditions.

This body design is not only elegant but efficient, achieving a low 0.28 drag coefficient (Cd) in petrol models, and a sleek 0.27Cd in hybrid models. This means less wind noise, more control and enhanced fuel economy.<sup>(1)</sup> IS 300h models go even further with a unique rear bumper design and lower diffuser which redirects airflow for increased stability and reduced drag. Sleek hybrid badging on the rocker panels serves as a vivid reminder of the vehicle's impressive credentials.

While the L-finesse design language unifies the IS line, an array of appointment levels and Enhancement Packs create individuality, allowing you to select an expression of the IS

which best embodies your driving ambitions and personality.

IS Luxury variants offer a comprehensive portfolio of refinements as standard and are distinguished on the outside by 17" alloy wheels. Hybrid powered IS 300h variants with Enhancement Packs 2 and 3 are fitted with a multi-spoke 18" wheel design.

F Sport models evoke a more athletic persona energised by aggressive 18" F Sport wheels and a more flamboyant treatment of the Lexus signature spindle grille. The sophistication of the IS 350 Sports Luxury models is seen in an exclusive 5-spoke alloy wheel which adds a finishing touch to the striking L-finesse design treatment.



# INTERIOR REFINEMENT

## STYLE AND DESIGN

Inside the IS you'll discover a welcoming sense of space, yet at the same time a feeling of snugness and security. The aim was to create a 'Human Machine Interface' - Lexus engineers' speak for making the occupants feel as one with the vehicle. Such a feeling begins the moment you approach the vehicle with your Smart Key or Smart Key Card.<sup>(2)</sup> Opening the doors is as simple as gripping the door handle. Then, having put your foot on the brake, you can start the engine with the start button.

L-finesse is focused on driving ergonomics as much as elegance. Essential switches are within easy reach in the lower operation zone. On the centre console, feel how the concave shape of the Lexus Remote Touch Controller (LRT) slips neatly into the palm of your hand. As intuitively as using a computer mouse, it lets you access audio and climate control settings, or operate the navigation system.

Instrumentation is positioned near eye level in the upper display zone. A centrally-located 7" colour multimedia screen,

standard across all models, displays audio settings, music data, phone caller details and satellite navigation maps.<sup>(3)</sup> Depending on your location, you'll receive live traffic alerts<sup>(3)</sup> via the Lexus Remote Touch Controller.

In the Luxury and Sports Luxury models, a crisp Multi Information Display (MID) between the instruments provides concise information right in your line of vision.

An LFA inspired, 8" LCD instrument display exclusive to F Sport models lets you customise menus, providing information including audio settings and trip data in your preferred configuration.

Whether your vehicle is equipped with the Pioneer 8-speaker system or the Mark Levinson® audio system, each incorporates a Digital Radio (DAB+)<sup>(4)</sup> iPod®<sup>(5)</sup> and Bluetooth®<sup>(6)</sup> Connectivity and a dual USB input.<sup>(7)</sup>

For optimum posture, the driver's seat offers ten-way power adjustment while the passenger's seat has eight settings.

Sports Luxury and F Sport models give you three driver's seat memory positions allowing you to instantly recall your preferred seat adjustments, steering wheel and exterior mirror settings. Fortunately, heated and ventilated front seats are standard for all-weather comfort.

The longer wheelbase means more interior space, even the sculpted seatbacks enhance rear seat legroom, while the 60/40 split rear seat helps accommodate long cargo items.

To quell annoying UV glare, an electric rear sunshade rises up at the touch of a button; a convenience reserved for IS 250 and IS 350 Sports Luxury models, and IS 300h Luxury model with Enhancement Packs 2 and 3. Thoughtfully, the sunshade drops down automatically when you select reverse. F Sport, Sports Luxury and IS 300h Luxury model with Enhancement Packs 2 and 3 are equipped with a self-dimming interior mirror which reduces glare from following motorists.



IS 300h Luxury model with Enhancement Pack 3 shown



IS 300h Luxury model shown





# FEEL THE ENERGY, FEEL ALIVE

## PERFORMANCE

With the first turn of the steering wheel, you'll feel the difference. It begins with the way Electric Power Steering (EPS) delivers more direct steering at higher speeds, allowing easier parking at lower speeds.

There's another twist; Drive Mode Select is standard. A simple turn of the dial on the centre console turns the personality of the vehicle from sedate to sensational. When 'ECO' mode is selected, the output of the drive train, and air conditioning are automatically controlled to enhance fuel-efficient driving, while an 'ECO' meter is displayed on the dash. 'NORMAL' mode ensures smooth acceleration and refined vehicle response. Turn to 'SPORT/SPORT S' mode and the instrumentation display changes from blue to red and the throttle becomes more direct.

The performance of the F Sport and Sports Luxury models goes even further. For more agile cornering, 'SPORT S+' mode firms up the Adaptive Variable Suspension (AVS) and the Electric Power Steering (EPS). In IS 350 F Sport and Sports Luxury models, Variable Gear Ratio Steering (VGRS) is also retuned, for greater high speed sensitivity and precision.

The double wishbone front suspension, a configuration used in most race cars, has been engineered for flatter cornering. Even the multi-link rear suspension enhances cornering grip.

You have a choice of three exhilarating engines. In the IS 350, a lightweight quad-cam 233kW 3.5 litre V6 is comprehensively equipped with technologies including dual variable valve timing (VVT-i) for maximum power when you need it and maximum fuel economy when you don't.

A high performance 8-speed transmission uses technologies derived from the racetrack-proven Lexus IS F to help you manage all this power. Such thinking includes G AI-SHIFT control which pre-selects the right gear on hills. It can even analyse G-forces when cornering to choose the optimum gear for precise control. In 'M' mode the transmission performs like a manual, with rapid shifting performance for crisp acceleration response.

The innovative Lexus Hybrid Drive in the IS 300h offers another dimension in responsive yet whisper quiet performance. As the advanced Atkinson cycle petrol engine works together with a high output 650 volt electric motor, acceleration response is truly electric.

In IS 250 models, a 2.5 litre V6 energised by direct injection and Dual VVT-i ensures spirited performance with impressive fuel efficiency. The 6-speed sequential shifting transmission gives you the choice of silky smooth shifting, or the precise control of a manual transmission in 'M' mode.

Whichever engine you choose, you'll breathe easier knowing IS 250, IS 350 and IS 300h engines are certified to the latest Euro V emissions standards.<sup>(16)</sup>





F Sport model shown



F Sport Scuff Plates shown

Overseas F Sport Dark Rose model shown

F Sport Exclusive Pedals shown

# WHEN YOU MAKE TRACKS, MAKE A STATEMENT

F SPORT

A team of passionate designers and engineers employed by an elite 'F Sport' division have developed a unique line of IS models. You'll see their passion in the design of the IS F Sport with its confident demeanour and a more free-flowing treatment of the signature spindle grille. Large air vents recessed into the front bumper draw in air to help cool the brakes while improving stability and fuel economy.<sup>(1)</sup>

The stronger body structure gave Lexus engineers the ideal platform on which to develop a sports tuned suspension system, which helps keep all four wheels in contact with the road. Adaptive Variable Suspension (AVS)<sup>(2)</sup> continually adjusts the damper settings to suit driving and road conditions.

With the Drive Mode Select dial set to 'SPORT S+' mode, the Electric Power Steering becomes more direct and the Adaptive Variable Suspension becomes firmer. Vehicle Speed Sensing Control firms up the ride as speeds increase, while

Roll Attitude Control regulates the damping force for flatter cornering. In the IS 350 F Sport and Sports Luxury models, Variable Gear Ratio Steering (VGRS) becomes more direct for agile cornering.

Lexus engineers put the IS F Sport through its paces at Fuji International Speedway and the Nürburgring in Germany, widely regarded as the world's most demanding racing circuit. This enabled Lexus engineers to fine tune damper settings, spring rates and suspension geometry for ultimate performance.

Fortunately, F Sport models look and feel as good as they perform. Immerse yourself into the driver's seat and discover how Lexus designers have developed a new integrated foam technique where the upholstery and the seat foam are formed as one. A snug recess grips the body for greater lateral support, while high side bolsters counteract G-forces to keep you secure while cornering.

Aluminium Sports Pedals and F Sport brushed aluminium scuff plates add a sporting edge, complementing the premium steering wheel. The LFA-inspired instrumentation comes alive as the centre display slides across to reveal customisable menus displaying precisely the information you want, from audio settings to engine data. In the hybrid equipped F Sport, the central display actually turns into a hybrid meter at the same time, displaying the status of the hybrid system from 'Charge' to 'Power'.

In 'M' mode, paddle shifters behind the steering wheel allow you to make rapid shifts like a manual vehicle. You may also use the paddle shifters in 'DRIVE' mode, which instantly changes the transmission to a temporary sequential mode. Experience the IS F Sport and get a sense of what it feels like to drive on Fuji Raceway.





IS 350 F Sport Audio shown



Overseas model shown

# TOUCHING THE HEART BY INSPIRING THE MIND

MARK LEVINSON

Lexus designers understand the emotive power of music. It has the ability to soothe, motivate, inspire and excite. To unlock such powers, Lexus commissioned audiophile designer Mark Levinson® to create a truly extraordinary audio system.

Mark Levinson® is not one man but a group of acoustic engineers who have traditionally created high-end audio systems costing over six figures for discerning audiophiles. They had previously refused to create systems for motor vehicles until they discovered Lexus, the first automotive company capable of providing an acoustically superior environment in which to showcase their audio systems.

From the outset, the objective was to create high resolution sound reproduction within a 360 degree, three-dimensional sonic space. Such precision is standard on Sports Luxury and IS 350 F Sport models, or optional

on IS 250 F Sport, IS 300h F Sport and IS 300h Luxury models with Enhancement Packs 2 and 3. You are surrounded by a network of 15 audiophile quality speakers.

In the instrument panel there are three 'Unity™' speakers, which are quite different from conventional designs because they have two coils, two diaphragms and one magnet for greater acoustic response. They can react instantly, switching from playing a high pitched snare drum to a soothing synthesiser tone, resulting in a breathtaking sense of audio dimension. A 200mm subwoofer mounted in the rear reproduces the deep bass tones and utilises an inverted motor structure that ensures optimum performance yet conserves cabin space.

Being 'GreenEdge®' speakers they are capable of remarkable performance with reduced power consumption and distortion. Each speaker is equipped

with an acoustic lens which disperses sound more evenly throughout the cabin.

The driving force is a 12-channel 'Class D' digital amplifier that produces 835W of crystal clear 5.1" channel sound. A fanless design keeps it operating efficiently and quietly, delivering 250% more power than a conventional amplifier. Even the digital radio DAB+<sup>(4)</sup> achieves greater audio clarity. The audio system is able to connect to your iPhone,<sup>®(5)</sup> iPod,<sup>®(5)</sup> or iPad<sup>®(5)</sup> expanding your music library. While luxury motor vehicles typically employ consumer quality audio systems, Lexus offers an indulgence typically reserved for a select group of audiophiles.

As you turn up the volume, prepare your mind for an audio performance as scintillating as the on-road experience created for your body by Lexus engineers.





Overseas IS 300h Luxury model  
with Enhancement Pack 3 shown



# SAFETY IS THE ULTIMATE FORM OF SECURITY

SAFETY

Lexus believes prevention is the best form of protection, so its engineers have developed some of today's most advanced safety measures. Take the Vehicle Dynamics Integrated Management (VDIM) system. When cornering hard or travelling on slippery surfaces, VDIM harnesses a range of critical systems to work as one, helping to maintain vehicle stability and keep you out of harm's way.

A Pre-Collision Safety System (PCS)<sup>(9)</sup> fitted to F Sport with Enhancement Pack 2, Sports Luxury models and IS 300h with Enhancement Pack 3 takes safety even further. PCS responds whenever it perceives there is a possible impending collision by first sounding a buzzer and displaying a warning in the Multi Information Display (MID). Then Pre-Collision Brake Assist is activated to supplement your braking effort. If a collision is unavoidable, Pre-Collision Braking helps reduce collision impact.

Sports Luxury models and selected Enhancement Packs incorporate a Lane Departure Warning (LDW)<sup>(10)</sup> system which monitors your position. Should you ever stray out of your lane, a buzzer sounds and a warning appears on the Multi Information Display (MID).

A Blind Spot Monitor (BSM)<sup>(11)</sup> available in Sports Luxury and F Sport grades as well as Luxury hybrid models with Enhancement Packs 2 and 3, can detect vehicles in the blind spot alongside you. It even incorporates a Rear Cross Traffic Alert which sounds a buzzer to warn of traffic which may be outside your normal field of vision behind you when you're reversing.

The Rear View Camera (RVC) with Rear Guide Assist (RGA)<sup>(11)</sup> shows you what's behind your rear bumper. Cruise Control is fitted as standard, yet Sports Luxury and F Sport models with Enhancement Pack 2 go even further. An intelligent Radar Active Cruise Control (ACC)<sup>(12)</sup> helps maintain a selectable preset distance from traffic ahead.

Automatic High Beam (AHB)<sup>(13)</sup> in Sports Luxury models and IS 300h with Enhancement Packs 2 and 3 can sense oncoming traffic and intuitively dip the powerful Bi-Xenon HID headlights for added safety. During sudden braking, the rear LED brake lights illuminate with a pulsing effect to warn drivers behind you.

Lexus has engineered a totally new body structure utilising advanced techniques including laser-screw welding that holds panels together much stronger than traditional welding. Engineers then added a high strength body bonding adhesive and extra spot welds in critical areas for additional strength without additional weight. A stronger, more rigid body means not only greater collision protection, it also optimises roadholding especially while cornering.

Eight Supplemental Restraint System (SRS) airbags are fitted as standard including dual stage front airbags, two front knee airbags, seat mounted side airbags and curtain shield airbags. Sports Luxury models and IS 300h Luxury with Enhancement Pack 3 have the additional protection of rear seat mounted side airbags.

Even the bonnet structure offers protection as it incorporates an Electronic Control Unit (ECU) which can determine when a pedestrian or other moveable objects have collided with the vehicle. If the system is activated, the bonnet pops up to help cushion the impact and reduce the risk of pedestrian injury.



# WHEN YOU MAKE A MOVE, MAKE A QUANTUM LEAP

THE POWER OF h

In the IS 300h, the Lexus Hybrid Drive delivers an unparalleled driving experience. An advanced 2.5 litre Atkinson Cycle petrol engine works together with a high output electric motor delivering 164kW of silky smooth power yet consumes just 4.9L/100km of fuel.<sup>(1)</sup> The Continuously Variable Transmission adds to the blissfully smooth driving sensation.

During a typical journey, electricity provides the initial acceleration. As the pace picks up, the petrol engine kicks in. At cruising speeds the petrol engine is the main power source, then as you decelerate or brake, regenerative braking recharges the battery.

For increased acceleration, turn the Drive Mode Select dial to 'SPORT' or 'SPORT S' mode allowing the engine to rev higher between up-shifts. To quieten things down, 'EV' mode moves you gently along at up to 55km/hr utilising only electric power.

IS 300h Luxury

- Pedestrian Sensing Safety Bonnet
- Drive Mode Select (ECO/NORMAL/SPORT) + EV Mode
- Switchable Tacho/HV Indicator

- Vehicle Dynamics Integrated Management System (VDIM) (Incorporates Anti-skid Braking System (ABS) with Brake Assist (BA), Electronic Brakeforce Distribution (EBD), Traction Control (TRC) and Vehicle Stability Control (VSC))
- Lexus Remote Touch Controller (LRT)
- Hill-start Assist Control (HAC)
- Ventilated and Heated Front Driver and Front Passenger Seats
- 60/40 Split Fold Rear Seats
- Leather Accented Seats
- 4.2" Thin Film Transistor (TFT) LCD Multi Information Display (MID) (Luxury grade only)
- 7" Multimedia LCD Screen
- Digital Radio (DAB+)<sup>(4)</sup>
- Advanced Bluetooth® Connectivity<sup>(6)</sup>
- Satellite Navigation System with Live Traffic Alerts and Cockpit View<sup>(3)</sup>
- Voice Control Including iPod® Audio<sup>(5)</sup>
- Acceleration Sound Control
- Dual-zone Climate Control Air Conditioning
- S-Flow Energy Saving Air Conditioning
- Bi-Xenon High Intensity Discharge (HID) Headlights
- LED Daytime Running Lights (DRL)
- Electric Retractable and Heated Exterior Mirrors

- Rear Occupant Seatbelt Reminder
- Rear View Camera (RVC) with Rear Guide Assist (RGA)<sup>(11)</sup>
- Hybrid Unique Rear Bumper and Badging

IS 300h F Sport

- SPORT S+ Drive Mode
- Smart Key Card (Entry and Smart Start)<sup>(2)</sup>
- LFA Style Instrumentation with Energy Monitor
- Sports Suspension Settings
- Automatic-fold, Self-dimming Exterior Mirrors Seat Memory Linked
- Adaptive Variable Suspension (AVS)<sup>(8)</sup>
- 8 Supplemental Restraint System (SRS) Airbags
- Self-dimming Interior Rear View Mirror
- Rain Sensing Wipers
- 8-head Clearance and Reversing Sonars<sup>(11)</sup>
- Blind Spot Monitor (BSM) with Rear Cross Traffic Alert (RCTA)<sup>(11)</sup>
- F Sport Pedals
- F Sport Steering Wheel
- F Sport Unique Front Bumper Grille, Badging, Interior Ornamentation, F Sport Scuff Plates, Sports Front Bucket Seats





# RESPONSE THAT DESERVES RESPECT

## IS 350

### IS 350 Luxury

- Vehicle Dynamics Integrated Management System (VDIM) (Incorporates Anti-skid Braking System (ABS) with Brake Assist (BA), Electronic Brakeforce Distribution (EBD), Traction Control (TRC) and Vehicle Stability Control (VSC))
- Pedestrian Sensing Safety Bonnet
- Drive Mode Select (ECO/NORMAL/SPORT)
- Lexus Remote Touch Controller (LRT)
- Leather Accented Seats
- Ventilated and Heated Driver and Front Passenger Seats
- 60/40 Split Fold Rear Seats
- 4.2" Thin Film Transistor (TFT) LCD Multi Information Display (MID) (Not available on the F Sport grade)
- 7" Multimedia LCD Screen
- Digital Radio (DAB+)<sup>(4)</sup>
- Advanced Bluetooth® Connectivity<sup>(6)</sup>
- Satellite Navigation System with Live Traffic Alerts and Cockpit View<sup>(3)</sup>
- Voice Control Including iPod® Audio<sup>(5)</sup>
- Dual-zone Climate Control Air Conditioning
- Bi-Xenon High Intensity Discharge (HID) Headlights
- LED Daytime Running Lights (DRL)
- Electric Retractable and Heated Exterior Mirrors
- Rear Occupant Seatbelt Reminder
- Rear View Camera (RVC) with Rear Guide Assist (RGA)<sup>(11)</sup>
- 8-head Clearance and Reversing Sonars<sup>(11)</sup>

### IS 350 F Sport

- SPORT S+ Drive Mode
- Smart Key Card (Entry and Smart Start)<sup>(2)</sup>
- 15-speaker Mark Levinson® 835W Audio System
- Sports Suspension Settings
- Variable Gear Ratio Steering (VGRS)
- Automatic-fold Self-dimming Exterior Mirrors with Memory
- Adaptive Variable Suspension (AVS)<sup>(8)</sup>
- Rain Sensing Wipers
- Blind Spot Monitor (BSM) with Rear Cross Traffic Alert (RCTA)<sup>(11)</sup>

### Exclusive to F Sport

- LFA Style Instrumentation
- F Sport Pedals
- F Sport Steering Wheel
- F Sport Unique Front Bumper, Grille, Metallic Scuff Plates, Badging, Sports Front Bucket Seats, Aluminium Trim

### IS 350 Sports Luxury

- Radar Active Cruise Control (ACC)<sup>(12)</sup>
- Woodgrain-look Interior
- Tilt and Slide Electric Glass Moonroof with Sunshade
- Electric Rear Sunshade
- Lane Departure Warning (LDW)<sup>(10)</sup>
- Pre-Collision Safety System (PCS)<sup>(9)</sup>
- Automatic High Beam (AHB)<sup>(13)</sup>
- 10 Supplemental Restraint System (SRS) Airbags



IS 350 F Sport model shown



# THREE INTERPRETATIONS OF FREEDOM

## IS 250

### IS 250 Luxury

- Vehicle Dynamics Integrated Management System (VDIM) (Incorporates Anti-skid Braking System (ABS) with Brake Assist (BA), Electronic Brakeforce Distribution (EBD), Traction Control (TRC) and Vehicle Stability Control (VSC))
- Pedestrian Sensing Safety Bonnet
- Drive Mode Select (ECO/NORMAL/SPORT)
- Lexus Remote Touch Controller (LRT)
- Premium Steering Wheel and Shift Knob
- Manual Tilt and Telescopic Steering Wheel
- Hill-start Assist Control (HAC)
- Leather Accented Seats
- Ventilated and Heated Front Driver and Front Passenger Seats
- 60/40 Split Fold Rear Seats
- 4.2" Thin Film Transistor (TFT) LCD Multi Information Display (MID) (Not available on the F Sport Grade)
- 7" Multimedia LCD Screen
- Digital Radio (DAB+)<sup>(4)</sup>
- Advanced Bluetooth® Connectivity<sup>(6)</sup>
- Satellite Navigation System with Live Traffic Alerts and Cockpit View<sup>(3)</sup>
- Voice Control Including iPod® Audio<sup>(5)</sup>
- Dual-zone Climate Control Air Conditioning
- Bi-Xenon High Intensity Discharge (HID) Headlights
- LED Daytime Running Lights (DRL)
- Electric Retractable and Heated Exterior Mirrors
- Rear Occupant Seatbelt Reminder
- Rear View Camera (RVC) with Rear Guide Assist (RGA)<sup>(11)</sup>
- Dual Chrome Exhaust with Diffuser

### IS 250 F Sport

- SPORT S+ Drive Mode
- Electric Tilt and Telescopic Steering Wheel
- Smart Key Card (Entry and Smart Start)<sup>(2)</sup>
- Sports Suspension Settings
- Automatic-fold, Self-dimming Exterior Seat-memory Linked Mirrors
- Adaptive Variable Suspension (AVS)<sup>(8)</sup>
- 8-head Clearance and Reversing Sonars<sup>(11)</sup>
- Rain Sensing Wipers
- Blind Spot Monitor (BSM) with Rear Cross Traffic Alert (RCTA)<sup>(11)</sup>

### Exclusive to F Sport

- LFA Style Instrumentation
- Engine Sound Generator
- F Sport Pedals
- F Sport Steering Wheel
- F Sport Unique Front Bumper, Grille, Metallic Scuff Plates, Badging, Sports Front Bucket Seats, Aluminium Trim

### IS 250 Sports Luxury

- Radar Active Cruise Control (ACC)<sup>(12)</sup>
- Woodgrain-look Interior
- 15-speaker 835W Mark Levinson® Audio System
- Tilt and Slide Electric Glass Moonroof with Sunshade
- Electric Rear Sunshade
- Lane Departure Warning (LDW)<sup>(10)</sup>
- Pre-Collision safety System (PCS)<sup>(9)</sup>
- Automatic High Beam (AHB)<sup>(13)</sup>
- 10 Supplemental Restraint System (SRS) Airbags

IS 250 Sports Luxury model shown





White Pearl^

077



Premium Silver^

1J4



Mercury Grey^

1H9



Titanium Silver^

1J7



Starlight Black^

217



Onyx

212



White Nova^ - F Sport only

083



Flame Blue^

8U1



Vermillion^

3R1



Lapis Lazuli^

8V3

Lexus Australia reserves the right to vary and discontinue the current interior and exterior colours, trims and colour/trim/model combinations. Colours and trims displayed here are a guide only and may vary from actual colours due to printing/display process. See your Lexus dealer to confirm colour/trim/model availability when ordering your vehicle. Metallic/mica pearlescent paint is optional and subject to additional charges on most models.

^ Premium paint featured is an optional extra

# COLOURS THAT COME ALIVE

## EXTERIOR FINISHES

Pearls that sparkle. A Titanium finish that shimmers. These are some of the lighting effects that await as you view your Lexus IS in direct sunlight or under the glow of headlights after dark.

To achieve even greater allure, Lexus appoints a master craftsman known as a 'Takumi' to oversee critical stages of the painting process. These Takumi are highly accomplished individuals who hold an esteemed position in Japanese culture and possess a highly trained eye and rare skills.

The IS assumes a range of personalities through a series of advanced paint finishes utilising five different levels of paint technology. More than simply colours, these paint finishes are applied through complex processes which reveal a new sense of dimension and character in the L-finesse body design.

Your choice includes finishes like Titanium Silver which is the result of a complex six-coat, four-bake sonic process. First, a protective coating is applied to the body, then a design layer is added which

incorporates aluminium pigment, followed by a layer of solid colour. As the paint dries, the intricate structure of the aluminium pigment realigns to evoke an effect reminiscent of polished metal.

Starlight Black on the other hand employs a glass flake technology which displays a level of glitter and sheen when exposed to city lights quite unlike any other finish. Tiny glass flakes embedded deep within the paint coat reflect rays of light and emit a delicate yet powerful radiance and a golden hue under bright sunlight.

Exclusive to F Sport models, White Nova emits a dazzling glow reminiscent of the LFA supercar. A newly developed white pigment deep below the paint surface interacts with highly transparent glass flakes to produce a sleek whiteness with intense highlights.

Premium Silver is a rich metallic finish which incorporates tiny metallic particles embedded deep within the clear coat.

This results in a three-dimensional lighting effect which accentuates the deep curves and raised character lines of the body panels, adding structure and definition to the design.

Or you may prefer the more pronounced texture of Mica finishes presented in Vermillion or Mercury Grey. This complex process incorporates flakes of Mica which emit a mysterious blue-green tone.

White Pearl is a crystal sheen process which possesses powerful reflective qualities. A layer of pearl is applied over a reflective white base coat, to achieve a lustre reminiscent of a fine pearl. Remarkably, the reflective effect changes when it's exposed to different qualities of sunlight.

As the IS moves, the colours and finishes move with it to add a new definition to the design.



# THE INSIDE WORD ON STYLE

## EXTERIOR FINISHES

It's the feeling of leather accented seats against your skin. The warmth of woodgrain-look interior offset by metallic accents. These are some of the sensations you'll experience inside your Lexus IS model as finely crafted materials and finishes add a tactile nuance to the L-finesse design language.

The opulence of a leather accented interior on the seating and door panels comes in a selection of four interior treatments in Luxury and Sports Luxury models.

Topaz Brown leather accented interior creates a warm, inviting ambience. Then there's the soothing elegance of the Ivory interior. The latest addition to the interior palette is the cool crisp look of Moonstone. For the purists, there's also the classic elegance of a rich Black.

Each hue is offset by a choice of mouldings which highlight the clean lines of the interior design. The sleek lustre of Black Metallic adds a sense of definition and dynamism, while Sports Luxury models offer the sophistication of a soothing Ebony Grey interior treatment, or the warmth of Ebony Brown.

Whichever design package you choose, a premium steering wheel and shift knob come along for the ride. The rich lustre of a silver metallic finish

enhances the steering wheel design, offset by rich black trims. Across the instrument panel and door panels, high sheen metallic mouldings add vibrancy. So too, the silver metallic finish of the electrostatic air conditioning switch instils added style.

Sports Luxury models assume a look of refinement with woodgrain-look interior trims in a range of finishes. Cross quilting of the leather accented seats gives a sporty persona, perforated inserts add comfort.

F Sport interiors are energised by a choice of two interior design treatments. If you're daring, the new Dark Rose colour treatment features a deep red hue for a striking interior. Or maybe you'd prefer your F Sport in Black. In each scenario, F Sport models have exclusive wedge metal mouldings. These genuine metal structures have been etched to achieve a three-dimensional effect which complements the high performance attitude of the F Sport, while aluminium pedals and scuff plates add highlights to the high-tech look.

So you see, whatever attitude your preferred Lexus IS model displays to the outside can be complemented by an equally distinctive personality on the inside.



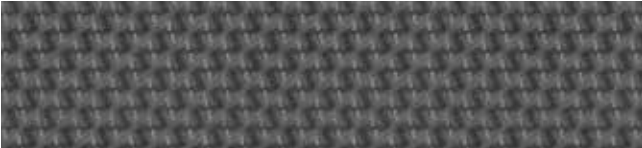
Black Metallic



Bamboo (Hybrid models only)



Ebony Grey



Wedge Metal (F Sport models only)



Ebony Brown

Lexus Australia reserves the right to vary and discontinue the current interior and exterior colours, trims and colour/trim/model combinations. Colours and trims displayed here are a guide only and may vary from actual colours due to printing/display process. See your Lexus dealer to confirm colour/trim/model availability when ordering your vehicle.



Ivory Trim  
Overseas model shown



Topaz Brown Trim  
Overseas model shown



Black Trim  
Overseas model shown



Moonstone Trim  
Overseas model shown



Black Trim (F Sport models only)  
Overseas model shown



Dark Rose Trim (F Sport models only)  
Overseas model shown



IS RANGE GENERAL SPECIFICATIONS

	IS 250	IS 300h	IS 350
DIMENSIONS	Length (Exterior/Interior) (mm)	4665/1945	4665/1945
	Width (Exterior/Interior) (mm)	2027/1500	2027/1500
	Height (Exterior/Interior) (mm)	1430/1115	1430/1115
	Wheelbase (mm)	2800	2800
	Front Track (mm)	1535	1535
	Rear Track (mm)	1550 (17" Tyre Fitted) 1540 (18" Tyre Fitted)	1550 (17" Tyre Fitted) 1540 (18" Tyre Fitted)
	Turning Circle at Kerb (m)	10.4	10.4
	Coefficient of Drag (Cd)	0.28	0.28
WEIGHTS AND CAPACITIES	Kerb Weight (kg) <sup>(14)</sup>	1645	1685
	Gross Vehicle Mass (kg) <sup>(15)</sup>	2090	2130
	Seating Capacity	5	5
	Luggage Capacity (L)	480	480
	Fuel Tank Capacity (L)	66	66
	Towing Capacity (Braked/Unbraked) (kg)	1500/750	- 1500/750
BODY	Construction	Monocoque	Monocoque
	Type	4-door Sedan	4-door Sedan
PETROL ENGINE	Type	Petrol	Petrol/Atkinson Cycle
	Capacity (cc)	2500	2494
	Designation	4GR-FSE	2AR-FSE
	Description	6-Cylinders, V Type, 24-valve, Quad-cam with Acoustically Controlled Inlet System (ACIS) and Dual VVT-i	4-Cylinders, In-line, 16-valve Twin-cam with Dual VVT-i
	Fuel Injection	D-4	D-4S
ELECTRIC MOTOR	Type	-	Permanent Magnet Synchronous Motor
	Maximum System Battery Voltage (V)	-	650
POWER ENGINE	Maximum Power (Combined) (kW)	-	164
	Maximum Power (Petrol) (kW @ rpm)	153 @ 6400	133 @ 6000
	Maximum Torque (Petrol) (Nm @ rpm)	252 @ 4800	221 @ 4200-5400
	Fuel Economy (Combined) (L/100km) <sup>(16)</sup>	9.2	4.9
	Carbon Dioxide (g/km) <sup>(17)</sup>	213	113
			225
HIGH VOLTAGE BATTERY	Type	-	NiMH
	Nominal Voltage (V)	-	230.4
DRIVE LINE	Layout	Rear Wheel Drive	Rear Wheel Drive
	Transmission	6-speed Sequential Electronically Controlled Transmission (ECT) with Paddle Shift	Continuously Variable Transmission (CVT)
STEERING	Type	Rack and Pinion	Rack and Pinion
	Power Assistance	Electric	Electric
BRAKES	Front	Ventilated Discs	Ventilated Discs
	Rear	Solid Discs	Solid Discs
SUSPENSION	Front	Independent Double Wishbone with Upper and Lower Ball Joints	Independent Double Wishbone with Upper and Lower Ball Joints
	Rear	Multi-link Independent	Multi-link Independent
TYRES AND RIMS	Front Tyre Size	225/45R17 - Luxury 225/40R18 - F Sport and Sports Luxury	225/45R17 - Luxury 225/40R18 - F Sport and Sports Luxury
	Rear Tyre Size	225/45R17 - Luxury 255/35R18 - F Sport and Sports Luxury	225/45R17 - Luxury 255/35R18 - F Sport and Sports Luxury
	Front/Rear Rim Size	17" x 7.5"/17" x 7.5" - Luxury 18" x 8"/18" x 8.5" - F Sport and Sports Luxury	17" x 7.5"/17" x 7.5" - Luxury 18" x 8"/18" x 8.5" - F Sport and Sports Luxury
	Spare Tyre	Space Saver	Run Flat Tyre - Luxury Tyre Repair Kit - F Sport
			Space Saver

ADVANCED FEATURES

	IS 250	IS 300h	IS 350
FEATURE DESCRIPTION	Luxury	F Sport	Sports Luxury
Vehicle Dynamics Integrated Management System (VDIM) (Incorporates Anti-skid Braking System (ABS) with Brake Assist (BA), Electronic Brakeforce Distribution (EBD), Traction Control (TRC) and Vehicle Stability Control (VSC))	•	•	•
Pedestrian Sensing Safety Bonnet	•	•	•
Drive Mode Select (ECO/NORMAL/SPORT)	•	•	•
SPORT S+ Drive Mode	-	•	•
Lexus Remote Touch Controller (LRT)	•	•	•
Cruise Control	Standard	Standard, EP2 - Radar Active Cruise Control (ACC) <sup>(12)</sup>	Radar Active Cruise Control (ACC) <sup>(12)</sup>
2 Door Smart Entry and Smart Start	•	•	•
Smart Key Card (Entry and Smart Start) <sup>(2)</sup>	-	•	•
Leather Accented Seats	•	•	•
10-way Driver, 8-way Front Passenger Power Adjustable Seats	•	•	•
3 Position Driver's Seat Memory	-	•	•
Ventilated and Heated Front Driver and Front Passenger Seats	•	•	•
Woodgrain-look Interior	-	-	•
LFA Style Instrumentation	-	•	-
4.2" Thin Film Transistor (TFT) LCD Multi-Information Display (MID)	•	-	•
7" Multimedia LCD Screen	•	•	•
15-speaker Mark Levinson® 835W Audio System	-	EP1, EP2	•
8-speaker Premium Pioneer Single DVD Digital Audio System	•	•	-
AUX and Dual USB Audio Inputs <sup>(7)</sup>	•	•	•
Digital Radio (DAB+) <sup>(4)</sup>	•	•	•
Advanced Bluetooth™ Connectivity <sup>(6)</sup>	•	•	•
Satellite Navigation System with Live Traffic Alerts and Cockpit View <sup>(3)</sup>	•	•	•
Sports Suspension Settings	-	•	•
Variable Gear Ratio Steering (VRGS)	-	-	-
Tilt and Slide Electric Moonroof with Sunshade	EP1	EP1, EP2	•
Electric Rear Sunshade	-	-	•
Dual-zone Climate Control Air Conditioning	•	•	•
Adaptive Variable Suspension (AVS) <sup>(8)</sup>	-	•	•
Lane Departure Warning System (LDW) <sup>(10)</sup>	-	-	•
Pre-Collision Safety System (PCS) <sup>(9)</sup>	-	EP2	•
Automatic High Beam (AHB) <sup>(13)</sup>	-	-	•
Bi-Xenon High Intensity Discharge (HID) Headlights	•	•	•
LED Daytime Running Lights (DRL)	•	•	•
Front Fog Lights	•	-	•
Supplemental Restraint System (SRS) Airbags	8	8	10
Rear Occupant Seatbelt Reminder	•	•	•
Rear View Camera (RVC ) with Rear Guide Assist (RGA) <sup>(11)</sup>	•	•	•
8-head Clearance and Reversing Sonars <sup>(11)</sup>	EP1	•	•
Rain Sensing Wipers	-	•	-
Blind Spot Monitor (BSM) with Rear Cross Traffic Alert (RCTA)	-	•	-
Anti-theft Horn and Intrusion Sensor	•	•	•

EP = Enhancement Pack





# OWNERSHIP SOLUTIONS

OWNERSHIP SOLUTIONS ALLOWS YOU TO DETERMINE YOUR FINANCE COSTS AND KNOW THE GUARANTEED FUTURE VALUE (GFV)\* OF YOUR VEHICLE FROM THE OUTSET. IT OFFERS YOU CHOICE, CONTROL AND CERTAINTY. IN SHORT, EVERYTHING YOU'D EXPECT FROM LEXUS.

## How does Ownership Solutions work?

- You choose the deposit that best fits your needs.
- You choose your term.\*\*
- We agree on the estimated kilometres you think the vehicle will have travelled at the end of the term (the End Odometer). The End Odometer will also include any kilometres already on the vehicle.
- Lexus Financial Services (LFS) then determines the GFV of your vehicle. The GFV is the minimum value of your Lexus at the end of your finance contract. Your monthly repayments are then calculated based on the above information with a final payment equal to your GFV. Then, if you return your Lexus at the end of the term and satisfy the agreed terms and conditions, LFS will pay you the GFV which will be put against the final payment.

## The end of the term? Simply replace, retain or return.

At the end of your term you can choose to:

- Replace or sell your Lexus using the trade-in value or sale price to pay the remaining balance of your account.
- Retain your Lexus and simply pay the remaining balance of your account (including final payment).
- Alternatively, return your Lexus and, subject to fair wear and tear conditions and the agreed kilometres being met, we'll put the GFV towards the final payment on your account.

## Choosing your deposit – what is best for you?

With the flexibility of Ownership Solutions, you can choose the deposit that best fits your current needs.

- If, for example, you have funds tied up in other investments, you can choose to finance your new Lexus with a zero deposit:†
- Alternatively, by using a larger deposit you can lower your monthly repayments.
- Better still, compared to other finance options over a similar term, Ownership Solutions can provide more affordable monthly repayments:\*\*\*

## Want more certainty?

With Ownership Solutions you've got the reassurance that at the end of the term (subject to fair wear and tear and agreed kilometres being met) you'll never owe more than your vehicle's worth to LFS. In other words, you don't have to worry about what your vehicle will be worth in the future because you know its minimum value from the outset.

## What happens in the case of the unexpected?

If your vehicle incurs damage and does not meet the Fair Wear and Tear guidelines, LFS will give you the opportunity to have your vehicle repaired. Otherwise, LFS can organise the repairs and deduct the cost from your GFV. This adjusted GFV will then be the price that LFS will offer you if you return the vehicle at the end of your term. Of course, if you retain the vehicle, the condition doesn't matter, however, if you replace it or sell it privately the condition will obviously impact your sale price.

## So what does your accountant think?

Naturally, we think Ownership Solutions is an excellent, innovative way to put you in control of buying a new Lexus. That said, we suggest you seek independent advice to ensure Ownership Solutions is right for you.

## Wouldn't it be great if Ownership Solutions was just the beginning?

Lexus' innovations and commitment to customer service extend well beyond Ownership Solutions. Once you purchase a new Lexus, you'll become a member of the Lexus Encore Privileges programme and enjoy a host of exclusive benefits†

For further details simply visit your nearest Lexus dealer or see [lexus.com.au/services/benefits/](https://lexus.com.au/services/benefits/)

\* Guaranteed Future Value (GFV) is the minimum value of your new or approved demonstrator Lexus at the end of your finance contract, as determined by Lexus Financial Services (LFS). If you decide to return your car to Lexus at the end of your term, (LFS) will pay you the agreed GFV amount which will be put against your final payment, subject to fair wear and tear conditions and agreed kilometres being met. The information provided is general in nature. You should seek your own financial advice to determine whether Lexus Ownership Solutions is appropriate for your individual circumstances. Terms and conditions, fees and charges apply. Lexus Ownership Solutions GFV products are available to approved customers of Lexus Financial Services, a division of Toyota Finance Australia Limited ABN 48 002 435 181, Australian Credit Licence 392536.

\*\* Up to four years.

\*\*\* Lower monthly repayments compared to similar term with no Guaranteed Future Value (GFV) or equivalent balloon final payment. Total interest charges will be higher if a GFV or balloon final payment is selected.

† Terms and Conditions apply.





# THE BENEFITS OF ENCORE

THE BENEFITS OF BEING A LEXUS OWNER GO FAR BEYOND THE INTRINSIC PLEASURE OF DRIVING THE VEHICLE. FROM THE MOMENT YOU'RE HANDED THE KEYS, YOU'LL ALSO BE WELCOMED TO THE LEXUS ENCORE PRIVILEGES PROGRAMME<sup>†</sup> - OFFERING A RANGE OF EXCLUSIVE INITIATIVES THAT REAFFIRM OUR ONGOING PURSUIT OF PERFECTION.

It all means you'll enter a world of benefits that extends to every corner of life. A world where everything's just that much easier and works that much more seamlessly. And a world where, should trouble ever find you, you can always find a helping hand.

Take our After Sales Service as an example. Both our technology and our technicians are at the forefront of automotive innovation. And our profound understanding of every single component of your Lexus means we can do more to ensure it's a pleasure to drive today, and in the long run.

It's a world you've always belonged in. A privilege unique to Lexus drivers.

### Silver service

Every aspect of your Lexus is built around your comfort and convenience, so it's fitting that when it's ready for a service, we'll come and pick it up from you and provide you with a complimentary loan car while we're inspecting. Plus, when we return your Lexus, it will have received a complimentary wash and interior vacuum.

### Experience Lexus outside your vehicle

We're constantly striving to enhance the Lexus ownership experience. It's what we're known for. Our luxury events will be the perfect way to experience the Lexus lifestyle and network with other owners. Tickets may be limited, so be quick to secure your place.

### Peace of mind

Wherever you are and whatever you're doing, you can relax because with our Encore Privileges programme, you have the 24-hour support of Lexus Drive Care. We'll look after your car and, just as importantly, we'll look after you and your passengers.

### Well read

You can stay abreast of all things Lexus from the comfort of your own home, with our Lexus Magazine delivered right to your door. It'll keep you updated on all aspects of luxury living and covers everything you need to know about the cars that are leading the world.

<sup>†</sup> Terms and Conditions apply.  
See [lexus.com.au/services/benefits/](https://lexus.com.au/services/benefits/) for details





New Vehicle Warranty expires four years from date of first delivery or 100,000kms, whichever occurs first. Refer to the warranty conditions. The New Vehicle Warranty does not limit and may not necessarily exceed your rights under the Competition and Consumer Act 2010.

The HV (Hybrid) Battery Warranty expires eight years from date of first delivery or 160,000kms, whichever occurs first. The warranty is comprised of the three year Lexus New Vehicle Warranty and an additional five year Lexus Australia Hybrid (HV) battery warranty. Refer to the warranty conditions. The Warranty does not limit and may not necessarily exceed your rights under the Competition and Consumer Act 2010.

THIS BOOK IS PRINTED ON GREEN PAPER

The Lexus book you are reading has been produced using HannoArt Satin. A premium coated paper representing a level of craftsmanship that is without peer. This environmentally responsible paper is manufactured using low environmental impact FSC® certified pulp and is certified carbon neutral by The Carbon Reduction Institute.\* Sappi, the manufacturers of HannoArt, place high importance on delivering an environmental and sustainable operation. They operate under world's best practice ISO 14001 EMS and EMAS certification and eliminate harmful by-products by using Totally Chlorine Free (TCF) pulp. HannoArt is archival, so like our vehicles it's made to stand the test of time.

As a company that strives to lessen its impact on the environment in every way possible, Lexus believes that choosing our paper wisely is one more step we can take in preserving our planet.



- (1) Fuel consumption varies depending on driving conditions / style, vehicle conditions and options/accessories. ADR81/02 combined cycle (L/100km) for auto models.
- (2) Smart Key Card is available on Sports Luxury, F Sport and IS 300h Luxury models with Enhancement Packs 2 and 3.
- (3) Current navigation mapping database encompasses major capital and primary national road networks and offers some coverage in regional areas. SUNA™ GPS Traffic Updates are only available in metropolitan Adelaide, Brisbane, Canberra, Gold Coast, Melbourne, Perth and Sydney; it operates from information provided by Intelimatics Australia and may not cover all road incidents and congestion. See sunattraffic.com.au for details.
- (4) Digital radio station coverage dependent on vehicle location.
- (5) iPod®, iPad® and iPhone® are trademarks of Apple, Inc. Not all devices will be compatible and functionality will vary depending on the device.
- (6) The Bluetooth® word mark is owned by Bluetooth SIG, Inc. Not all devices will be compatible and functionality varies depending on the device.
- (7) Not all devices will be compatible. Functionality varies depending on device.
- (8) Adaptive Variable Suspension (AVS) not available in base Luxury models.
- (9) Pre-Collision Safety System (PCS) is a driver assist technology and should not be used as a substitute for safe driving practices. Driver should continue to monitor the road.
- (10) Lane Departure Warning System (LDW) is a driver assist device only and should not be used as a substitute for safe driving practices. LDW is standard on IS 250 Sports Luxury, IS 350 Sports Luxury, IS 300h Enhancement Pack 2 and 3, and IS 350 F Sport Enhancement Pack 2.
- (11) Reversing Camera/Rear Guide Assist (RGA)/Sonar Parking/Blind Spot Monitor (BSM) are assist devices only and should not be used as a substitute for safe driving practices. The area into which the vehicle is driven must be visually monitored by the driver.
- (12) Active Cruise Control (ACC) is a driver assist technology and should not be used as a substitute for safe driving practices. Driver should continue to monitor the road.
- (13) Automatic High Beam (AHB) is a driver assist device only and should not be used as a substitute for safe driving practices.
- (14) Kerb, tare and payload weights are nominal and vary depending on options and accessories.
- (15) Gross Vehicle Mass (GVM) is the total permissible combined weight of the vehicle, including occupants, fuel and cargo.
- (16) Emissions vary depending on driving conditions / style, vehicle conditions and options / accessories.

\*Calculations encompass carbon emissions from seedling to printer. For full details please visit [www.kwdoggett.com.au](http://www.kwdoggett.com.au)

**IMPORTANT NOTICE – please read:** Lexus Australia uses its best endeavours to ensure this material is correct when published. You must check with your authorised Lexus dealer when ordering to ensure the vehicle with your chosen specifications, equipment and colour is available and that the vehicle can be delivered within the timeframe suitable to you. When ordering accessories, you must check with your authorised Lexus dealer to ensure the accessory's design, features and colours are available and will fit your vehicle. Please also consider the mass of your load to ensure you will not exceed the maximum allowable individual axle capacity, Gross Vehicle Mass and/or Gross Combined Mass of the vehicle. Refer to [lexus.com.au](http://lexus.com.au) for further details. Colours displayed here are a guide only and may vary from actual colours due to printing/ display processes. Certain accessories when fitted will require the removal of standard equipment. Standard equipment may be retained by Lexus Australia. Lexus Australia reserves the right to change, without notice, at any time prices, colours, materials, equipment, specifications and discontinue colours/models. To the extent permitted by law, Lexus Australia will not be liable for any damage, loss or expense incurred as a result of reliance on this material in any way. Distributed nationally by Lexus Australia ABN 64 009 686 097, 155 Bertie St, Port Melbourne 3207. VALID: L3076-3. PRINTED: AUGUST 2014. GLX895.

To learn more about the IS Line contact your Lexus Dealer on 1800 023 009



IS 300h F Sport model shown



